

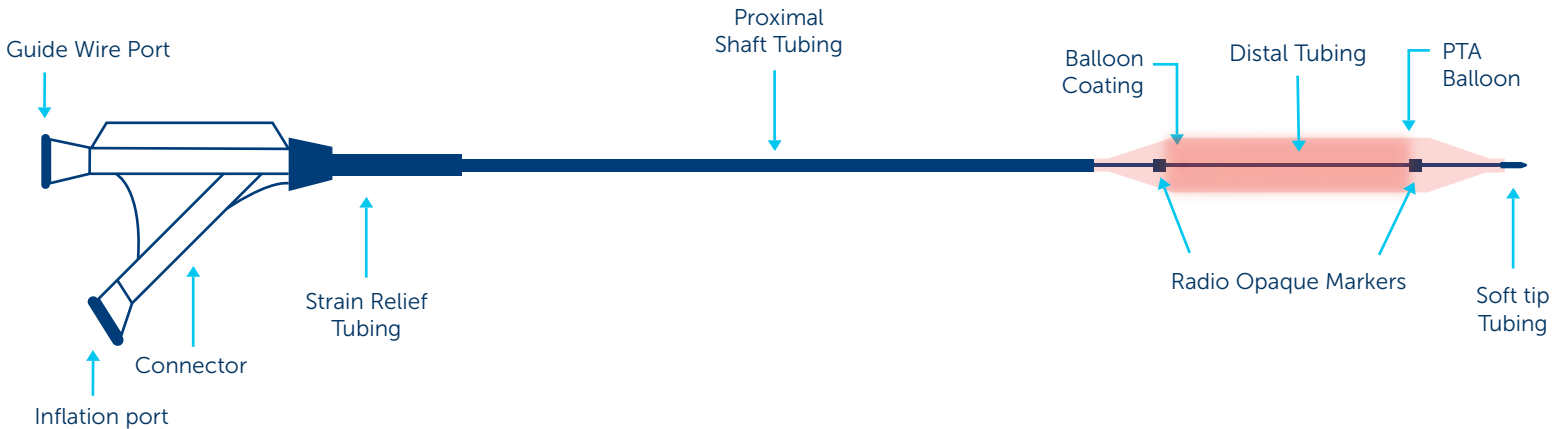
TECHNICAL SPECIFICATIONS

Drug / Excipient	
Drug	Sirolimus
Drug Dose	1.27 µg/mm ²
Drug Carrier	Phospholipid
Balloon	
Balloon Compliance	Semi-Compliant
Sheath Compatibility	6F, 7F, 8F
No. of folds	3 & 6

Size Available	
Balloon Diameter (mm)	3.00, 4.00, 5.00, 6.00, 7.00, 8.00, 9.00, 10.00, 12.00
Balloon Length (mm)	20, 40, 60, 80, 100, 120, 150, 200
Catheter Shaft length (cm)	45 & 90
Delivery System	
Guidewire Compatibility	0.035" OTW
Guiding Catheter Compatibility	7F to 9F

For Ordering information visit website: www.conceptmedical.com

OTW DELIVERY SYSTEM



*The above diagram is just an illustration of the product.
Disclaimer: The law restricts these devices to sale by or on the order of a physician. Indications, contradictions, warnings can be found in the product labelling / IFU supplied with each device. For restricted use only in countries where product is registered with applicable health authorities.



f t i n /conceptmedicals
✉ info@conceptmedical.com
🌐 www.conceptmedical.com

Scan for more details

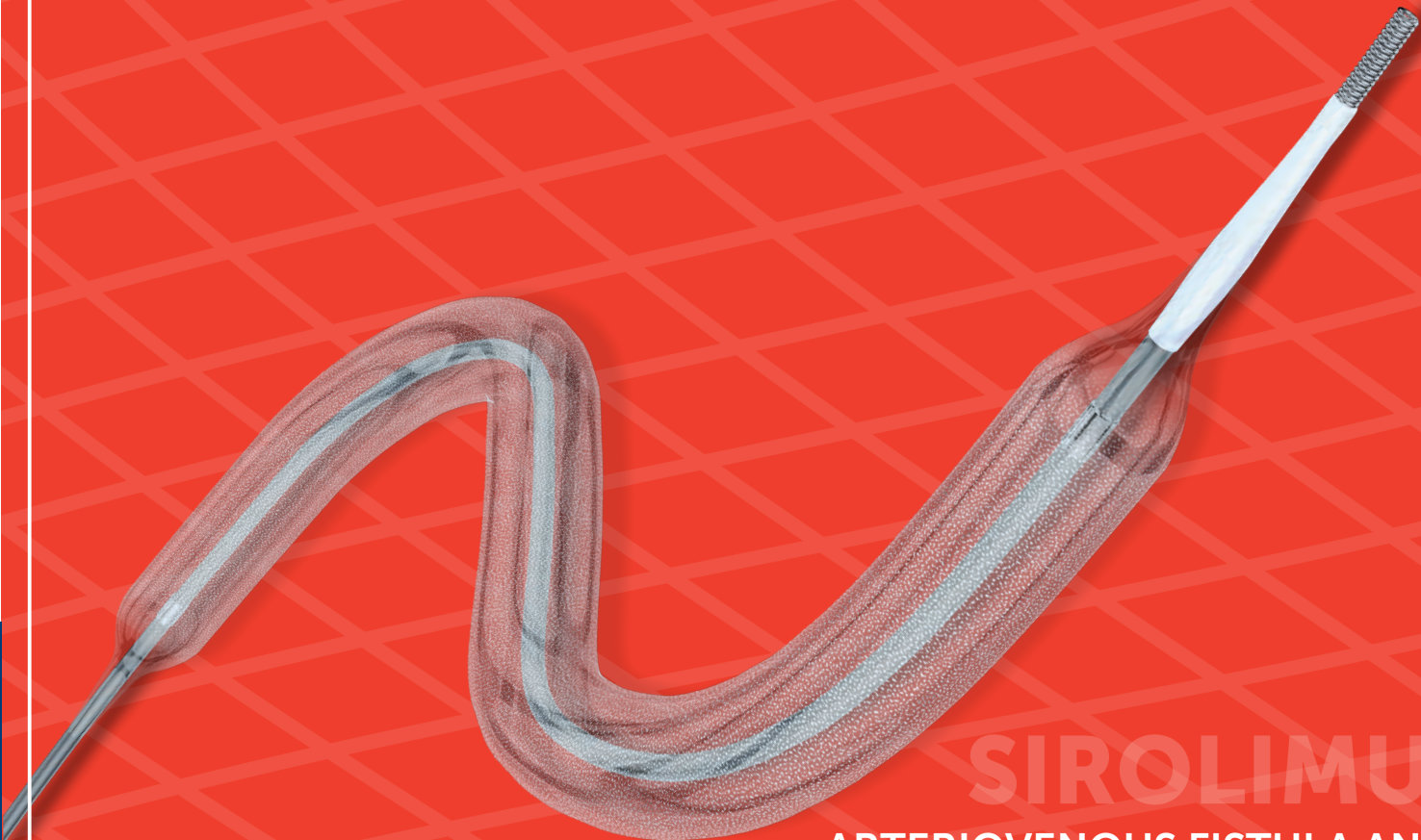


CB.BA.MF.BRO.ver.4.0.23-05



MagicTouch **AVF**

SIROLIMUS COATED PTA BALLOON CATHETER



SIROLIMUS
ARTERIOVENOUS FISTULA AND GRAFT

MAGICTOUCH AVF

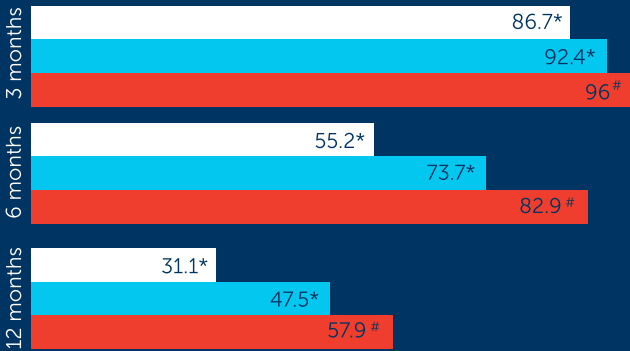
PROMISING REVASCULARIZATION THERAPY FOR DYSFUNCTIONAL DIALYSIS FISTULA

Magic Touch AVF Designed with Nanolute technology is intended for stenotic lesions of dysfunctional arteriovenous fistula and graft. Nanolute Technology facilitates homogenous drug transfer to the vessel wall. It also avoids chronic inflammation by avoiding the use of polymers.

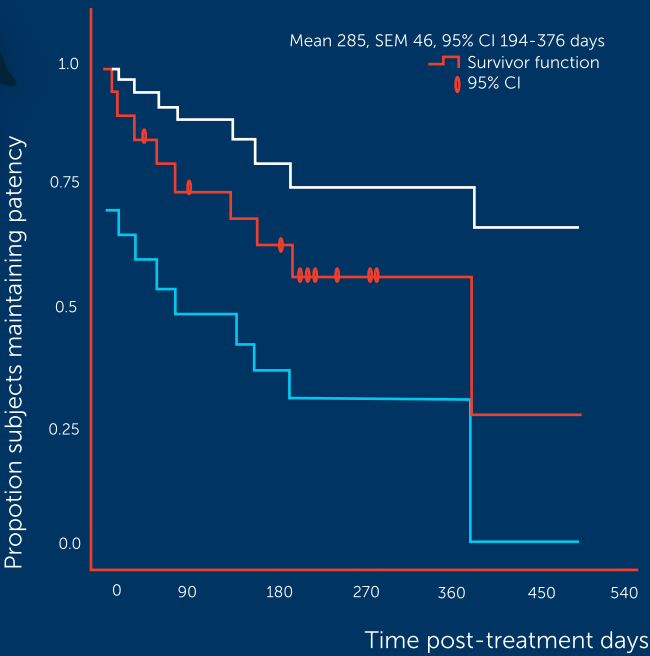
MAGIC TOUCH AVF PATENCY RATE

- POBA
- PCB
- MAGIC TOUCH AVF

*Adopted from Kennedy SA et al. J Vasc Interv Radiology 2019
Presented at LINC 2021 by Dr. Tang Tjun Yip

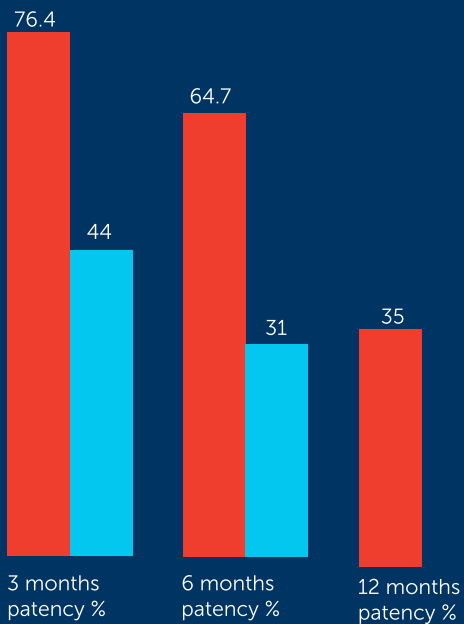


CLINICAL EVIDENCE Kaplan-Meier Survival Estimates of circuit primary patency



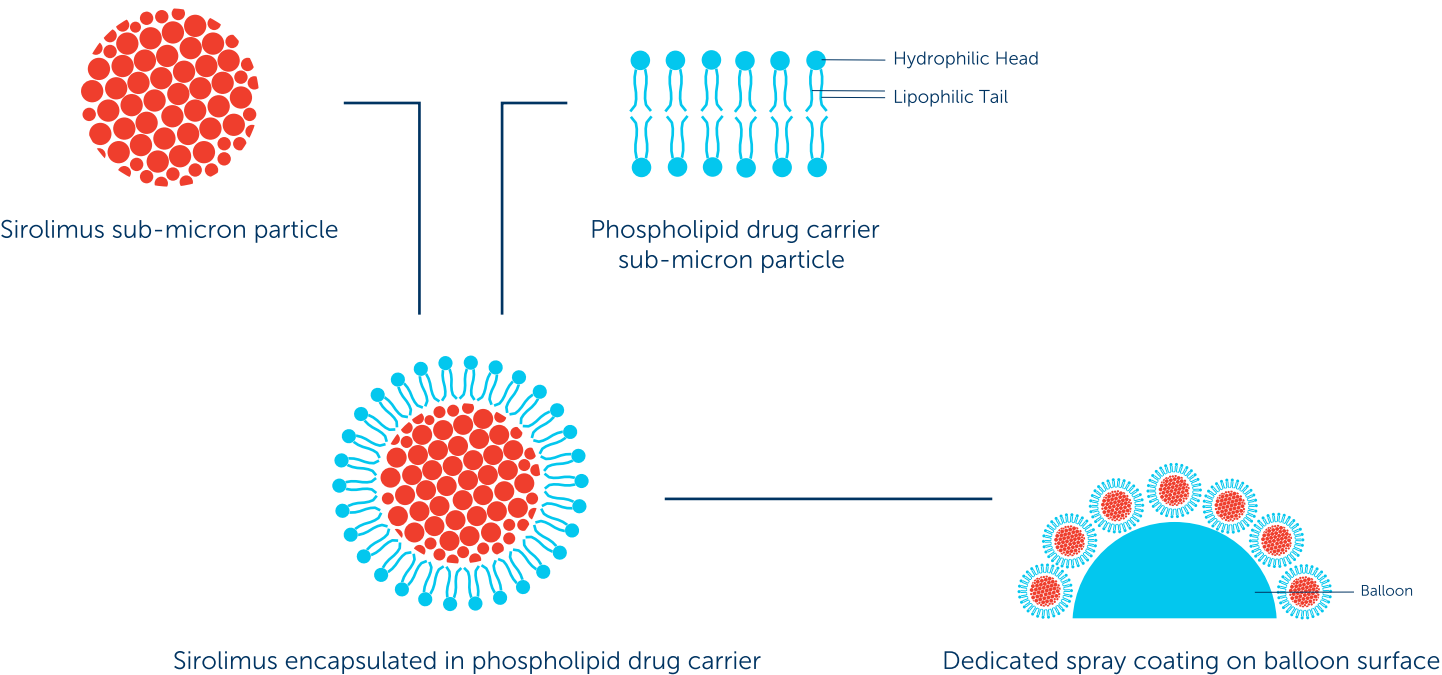
Patency of AVG*

- Avg patency threshold
- Avg patency after using Magic Touch AVF



*Presented by Dr. Chieh Suai Tan, at LINC 2021

NANOLUTE TECHNOLOGY

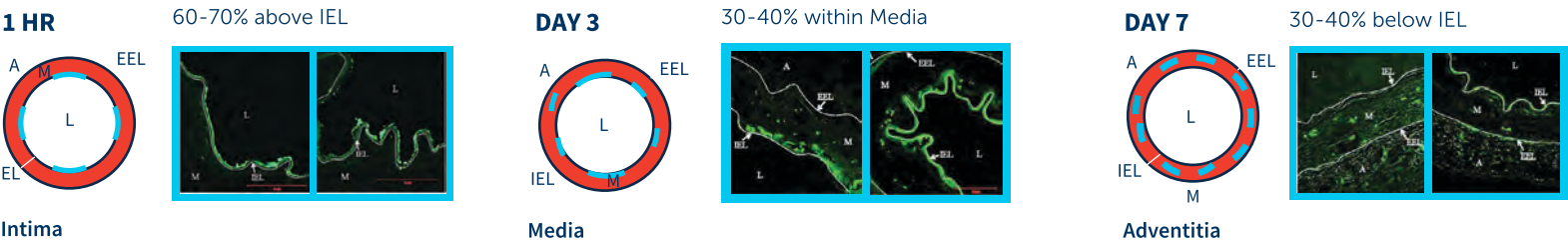


ADVANTAGES OF NANOLUTE TECHNOLOGY

- Facilitates better adhesion of Sirolimus on the balloon surface
- Circumferential coating ensures homogeneous drug delivery
- Effective drug transfer to the deepest layer of the vessel
- Better in-tissue bioavailability of Sirolimus

SIROLIMUS DISTRIBUTION STUDY

DTF labelled Sirolimus was used to assess the drug distribution following DCB treatment*



A: Adventitia; EEL: External Elastic Lamina; IEL: Internal Elastic Lamina; L:Lumen; M: Media *EuroIntervention. 2013 May 20;9(1): 148-56