

TECHNICAL SPECIFICATIONS

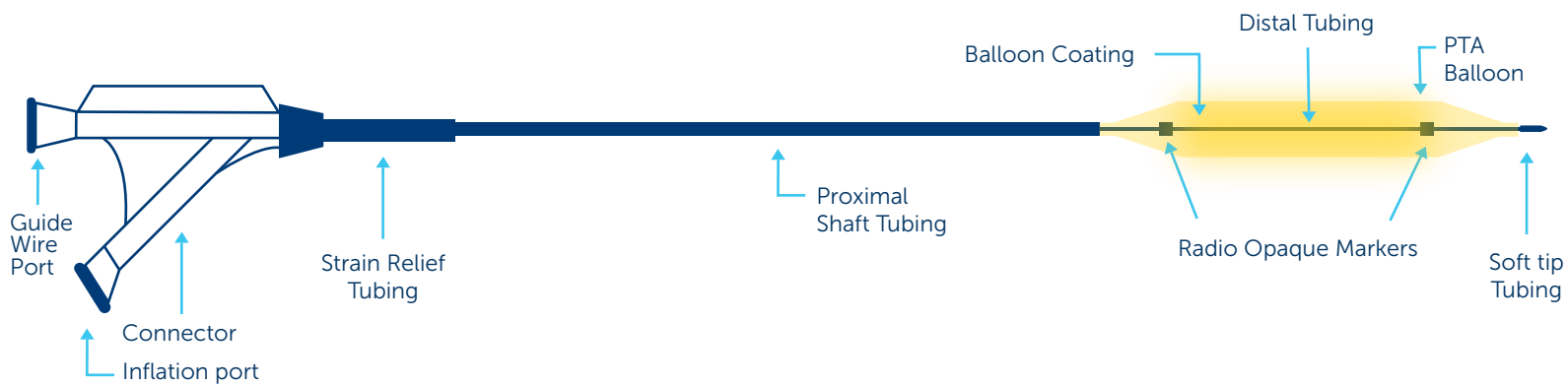
Drug / Excipient	
Drug	Sirolimus
Drug Dose	1.27 µg/mm²
Drug Carrier	Phospholipid
Balloon	
Delivery System	Over The Wire
Balloon Compliance	Semi-Compliant
Sheath Compatibility	4F to 7F
Guiding Catheter Compatibility	5F to 9F
No. of folds	3 & 6

GUIDEWIRE COMPATIBILITY

Balloon Diameter (mm)	
0.014"	2.00, 2.50, 3.00, 3.50, 4.00
0.018"	2.00, 2.50, 3.00, 3.50, 4.00, 5.00, 5.50, 6.00, 7.00
0.035"	3.00, 4.00, 5.00, 6.00, 7.00, 8.00, 9.00, 10.00, 12.00
Balloon Length (mm)	
0.014"	40, 60, 80, 100, 120, 150, 200
0.018"	40, 60, 80, 100, 120, 150, 200
0.035"	20, 40, 60, 80, 100, 120, 150, 200
Catheter Shaft Length (cm)	
0.014"	90, 120, 150
0.018"	90, 120, 150
0.035"	130, 150

For Ordering information visit website: www.conceptmedical.com

OTW DELIVERY SYSTEM



*The above diagram is just an illustration of the product.
Disclaimer: The law restricts these devices to sale by or on the order of a physician. Indications, contradictions, warnings can be found in the product labelling / IFU supplied with each device. For restricted use only in countries where product is registered with applicable health authorities.



Concept
Medical

f t i n /conceptmedicals

✉ info@conceptmedical.com

🌐 www.conceptmedical.com

Scan for more details



CB.BA.MP.BRO.ver:2.0.21-02

Concept
Medical

MagicTouch PTA
SIROLIMUS COATED PTA BALLOON CATHETER

SIROLIMUS
PERIPHERAL ARTERY DISEASE

MAGICTOUCH PTA

Magic Touch PTA designed with proprietary Nanolute Technology is intended for percutaneous transluminal angioplasty of de-novo, stenotic and in-stent restenotic lesions in Superficial femoral (SFA), popliteal, Below The Knee (BTK) and iliac arteries.

PRIMARY PATENCY AT 6 MONTHS



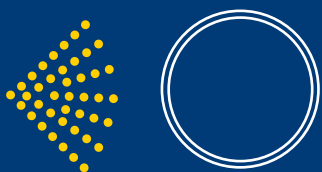
PRIMARY PATENCY AT 12 MONTHS



Presented at TCT CONNECT 2020 & LINC 2021 by Dr. Edward Choke
Patients treated with Magic Touch PTA had **Rutherford scores 5 & 6** and WIFI score 4-8.

UNIQUE COATING TECHNOLOGY

Magic Touch PTA is developed with Nanolute Technology which possesses unique circumferential coating technology that facilitates homogeneous drug distribution to target lesions



COATING

Circumferential Coating is performed under Low Pressure inflation leading to 100% surface area coating.



REFOLDING

3 or 6 folds



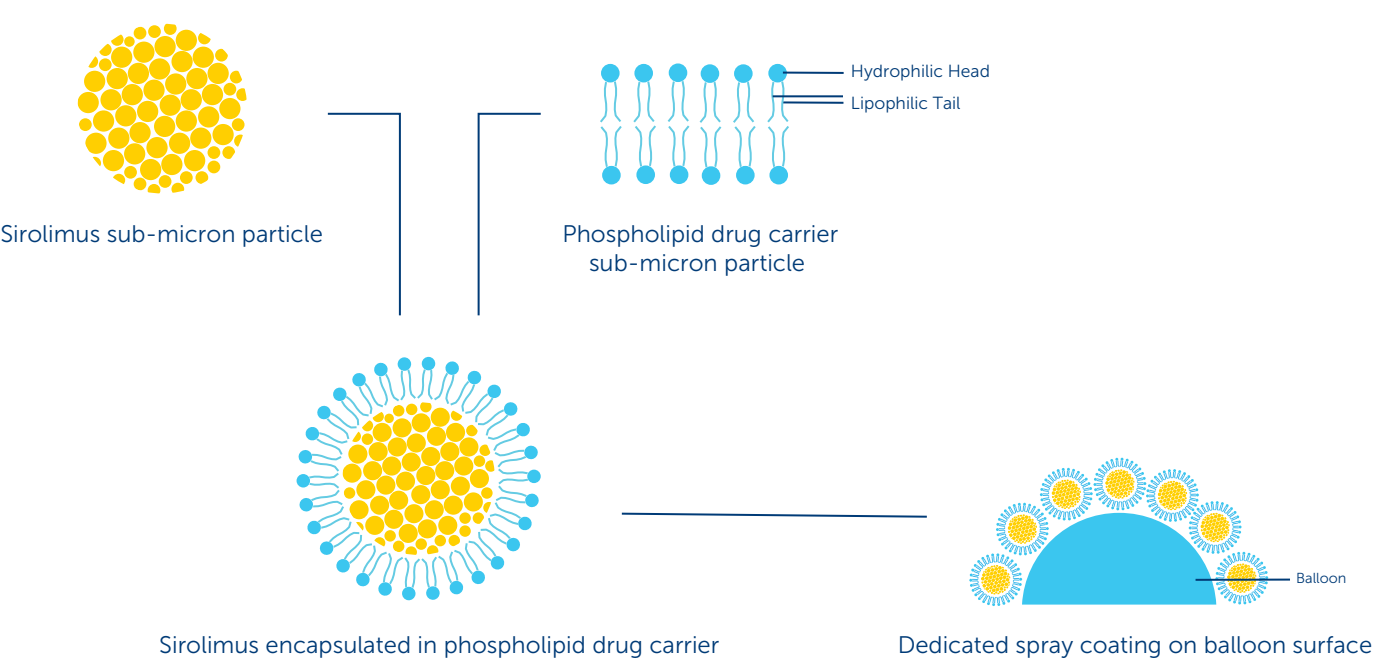
INFLATION

Homogeneous Drug Delivery due to Circumferential Coating

WHY SIROLIMUS?

Attribute	Paclitaxel	Sirolimus
Drug Nature	Cytotoxic	Cytostatic
Drug Therapeutic Range	Narrow	Wide
Margin of Safety	100 fold	10,000 Fold
Tissue Absorption	Fast	Slow
Tissue Retention	Long	Short

NANOLUTE TECHNOLOGY

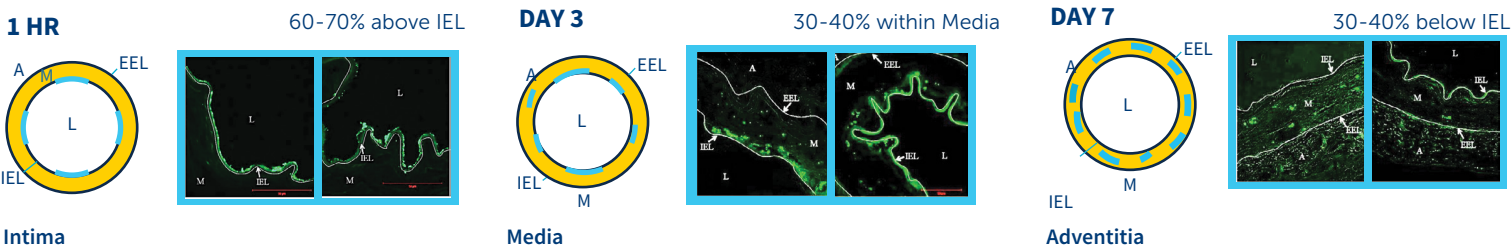


ADVANTAGES OF NANOLUTE TECHNOLOGY

- Facilitates better adhesion of Sirolimus on the balloon surface
- Effective drug transfer to the deepest layer of the vessel
- Circumferential coating ensures homogeneous drug delivery
- Better in-tissue bioavailability of Sirolimus

SIROLIMUS DISTRIBUTION STUDY

DTF labelled Sirolimus was used to assess the drug distribution following DCB treatment*



A: Adventitia; EEL: External Elastic Lamina; IEL: Internal Elastic Lamina; L: Lumen; M: Media *EuroIntervention. 2013 May 20;9(1): 148-56