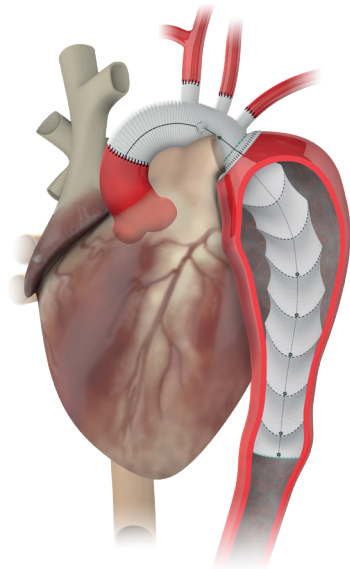


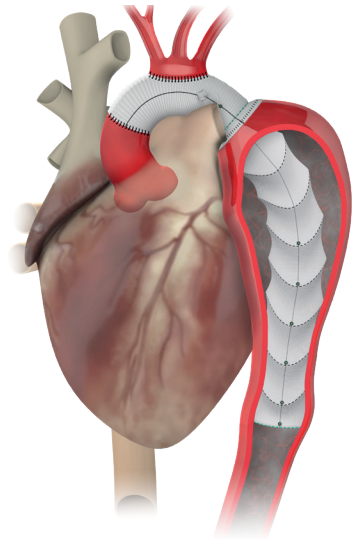
 **thoraflex™ hybrid**

 **TERUMO**
Aortic

The **FIRST** branched Frozen Elephant Trunk Device with Plexus and Ante-Flo™ configurations



Thoraflex™ Hybrid Plexus facilitates individual arch vessel reconstruction



Thoraflex™ Hybrid Ante-Flo™ configuration facilitates the **Island Technique**



Earlier re-warming,
reduced myocardial
ischaemia, lower body
ischaemia and
operating times^{1,2,3,4}



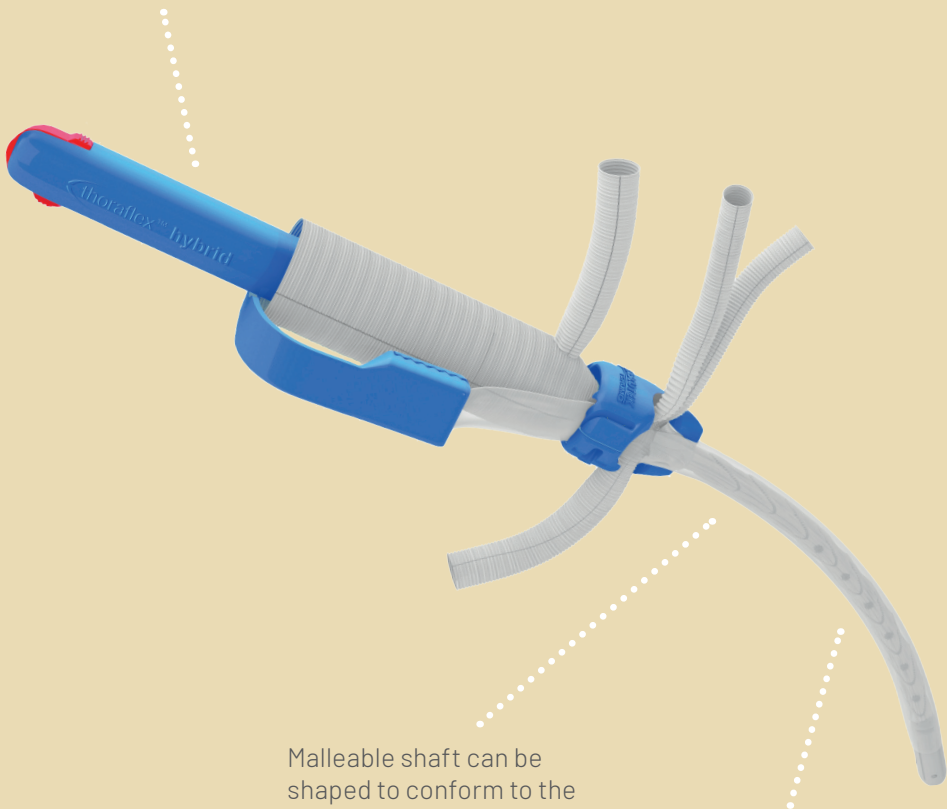
Compact design with
easy deployment
system²



Potential for one-stage
operation⁵

Plexus and Ante-Flo™ designs enable a choice of surgical techniques and widen the treatable patient population

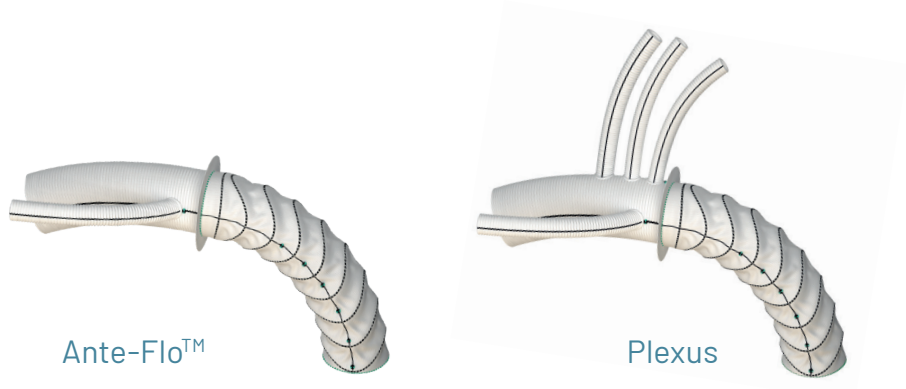
Compact design with easy deployment system ²



Malleable shaft can be shaped to conform to the aorta anatomy making the device less traumatic on the descending aortic wall and easier to introduce into the aorta²

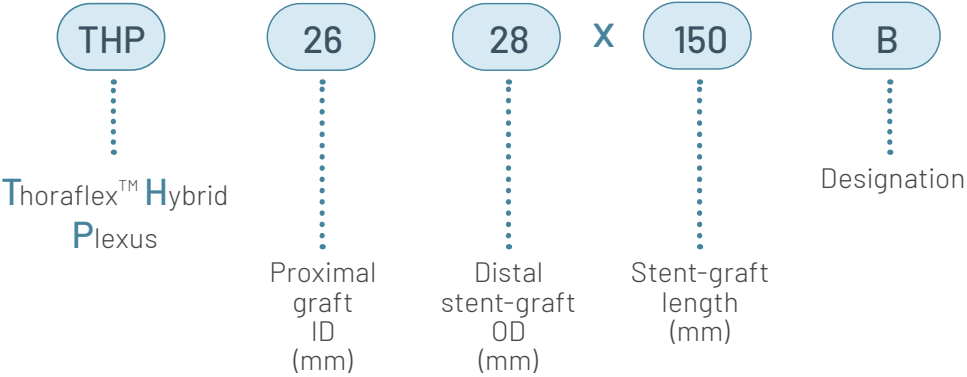
Smaller 24 and 26mm distal stents enable a larger patient population to be treated

“ Implantation of the Thoraflex™ Hybrid device resulted in excellent outcomes and beneficial aortic remodelling during follow-up. ”⁴



Thoraflex™ Hybrid used for the Frozen Elephant Trunk technique allows earlier patient re-warming, reduces myocardial ischaemia, lower body ischaemia and operating times.^{1,2,3,4}

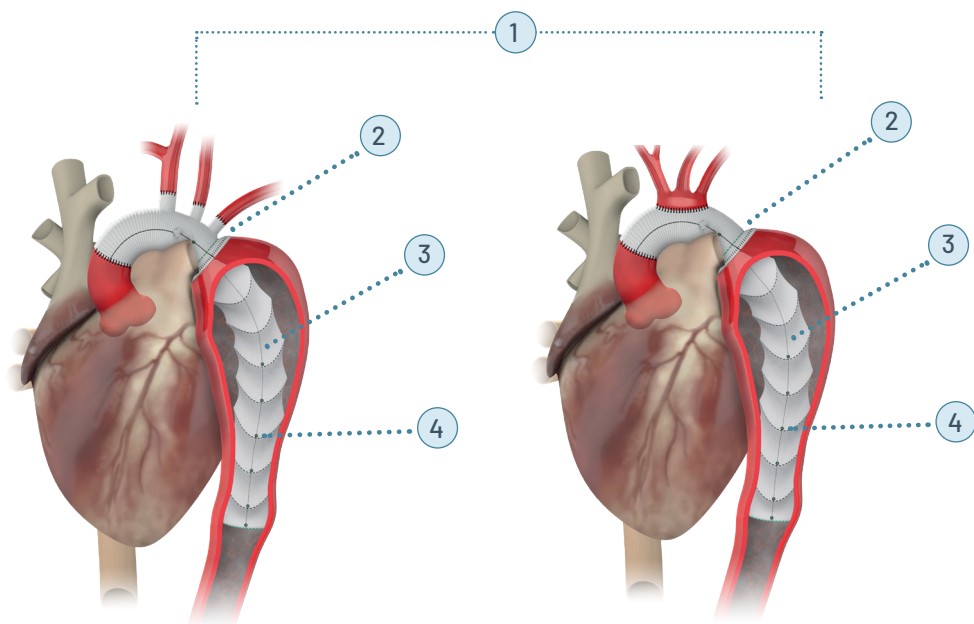
Catalogue Number Explanation



- Note:
- (i) Refer to IFU for full technical product details.
 - (ii) Approximately 20mm between radiopaque markers.

Plexus

Ante-Flo™



- 1 Choice of Plexus and Ante-Flo™ designs for individual arch vessel reconstruction or the **Island Technique**
- 2 Gelweave™ Siena Collar ensures **easier and safer anastomosis** of the prosthesis to the aorta reducing the haemodynamic traction on the anastomosis²
- 3 **New smaller 24 and 26mm** stent options
- 4 Radiopaque markers **simplify secondary procedures if needed**²

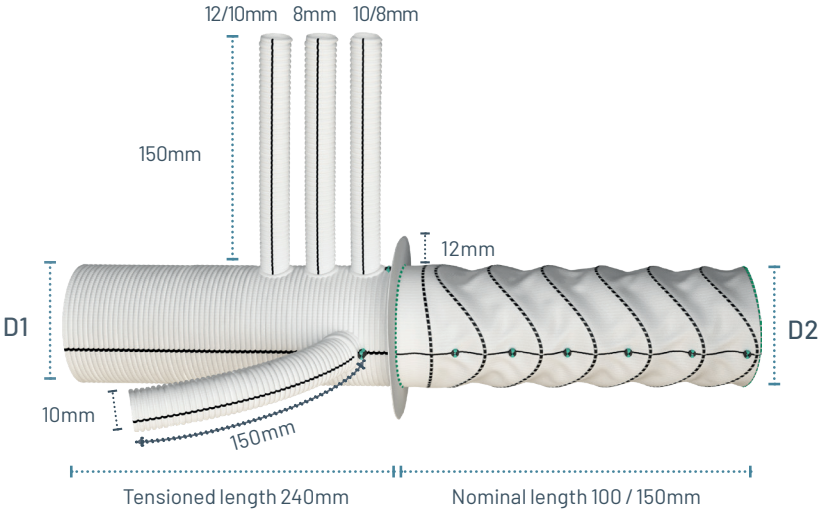
Plexus Product Ordering Information

Catalogue Number	Graft ID - D1 (mm)	Stent-graft OD - D2 (mm)	Catalogue Number	Graft ID - D1 (mm)	Stent-graft OD - D2 (mm)
THP2224x100B [#]	22	24	THP2224x150B [#]	22	24
THP2426x100B [#]	24	26	THP2426x150B [#]	24	26
THP2628x100B	26	28	THP2628x150B	26	28
THP2830x100B	28	30	THP2830x150B	28	30
THP3032x100B	30	32	THP3032x150B	30	32
THP3034x100B	30	34	THP3034x150B	30	34
THP3036x100B	30	36	THP3036x150B	30	36
THP3038x100B	30	38	THP3038x150B	30	38
THP3040x100B	30	40	THP3040x150B	30	40
THP3240x100B	32	40	THP3240x150B	32	40

[#] The branches on THP2224x100B, THP2426x100B, THP2224x150B and THP2426x150B are as follows: 10mm, 8mm & 8mm.

Stent-graft nominal length 100mm / 150mm

Stent-graft length may have some slight tolerance variance and can vary based on individual patient anatomy eg. tortuosity.



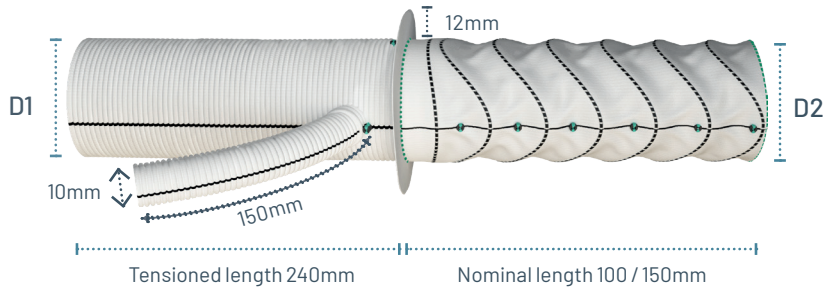
Note: drawing not to scale

Ante-Flo™ Product Ordering Information

Catalogue Number	Graft ID - D1 (mm)	Stent-graft OD - D2 (mm)	Catalogue Number	Graft ID - D1 (mm)	Stent-graft OD - D2 (mm)
THA2224x100B	22	24	THA2224x150B	22	24
THA2426x100B	24	26	THA2426x150B	24	26
THA2628x100B	26	28	THA2628x150B	26	28
THA2830x100B	28	30	THA2830x150B	28	30
THA3032x100B	30	32	THA3032x150B	30	32
THA3034x100B	30	34	THA3034x150B	30	34
THA3036x100B	30	36	THA3036x150B	30	36
THA3038x100B	30	38	THA3038x150B	30	38
THA3040x100B	30	40	THA3040x150B	30	40
THA3240x100B	32	40	THA3240x150B	32	40

Stent-graft nominal length 100mm / 150mm

Stent-graft length may have some slight tolerance variance and can vary based on individual patient anatomy eg. tortuosity.



Note: drawing not to scale

References

1. Di Marco L *et al.* **The Thoraflex™ Hybrid frozen elephant trunk device: the Bologna experience.** J Vasc Endovasc Surg, 2014; 21(3), 117-23.
2. Ruggieri VG *et al.* **Multibranched hybrid device for frozen elephant trunk: what does it change?** J Thoracic & Cardiovasc Surg, July 2015; 15(1), 253-255.
3. Maselli D *et al.* **Frozen elephant trunk with Thoraflex™ Hybrid prosthesis: early results of the prospective THORA-FET registry.** AATS Aortic Symposium, May 2016, NY, USA.
4. Shrestha M *et al.* **Total aortic arch replacement with a novel 4-branched frozen elephant trunk prosthesis: single-centre results of the first 100 patients.** J Thoracic and Cardiovasc Surg, July 2016; 152(1), 148-159.
5. Mariscalco G *et al.* **Reflection from UK Aortic Group: Frozen Elephant Trunk Technique as Optimal Solution in Type A Acute Aortic Dissection.** Semin Thoracic Surg, 2019; 31:686-690

terumoaortic.com

Discover solutions for every segment of the aorta

Visit our website for more information on use, indications, contraindications, warnings/precautions and availability within your market.



Manufactured by: Vascutek Ltd, Newmains Avenue,
Inchinnan, Renfrewshire, PA4 9RR, United Kingdom

Product availability subject to local regulatory approval.
Caution: Federal Law (US) restricts this device to investigational use only.
Thoraflex Hybrid is not approved in the US or Japan.